



Willingboro Art Alliance

SKETCHBOOK

NOVEMBER 2009

CELEBRATING OUR 45th YEAR
Founded 1964 - Incorporated 1965
The oldest art organization in Burlington County

November Monthly Meeting
Room 300, Kennedy Center
Levitt Parkway & Kennedy Way, Willingboro

Wednesday, November 4, 7:00 PM

Guest Speaker
Jim Rahn

Refreshments for our November meeting
will be provided by
Marilyn Gill and Gene Kelly

EXECUTIVE BOARD MEETINGS

EXECUTIVE BOARD MEETING WILL BE
NOVEMBER 18TH – 4:30PM-6:30PM
CLOSED FOR VETERAN'S DAY
NOVEMBER 11TH
ALSO NOTE TIME CHANGED
ROOM 300 AT THE KENNEDY CENTER

NOVEMBER WORKSHOPS*

(all levels welcome)

9AM, Wednesdays, Room 300, Kennedy Center

November 4
November 11
November 18
November 25

Tissue Paper Art
Center Closed – Veteran's Day
Critique
Center Closed for Thanksgiving

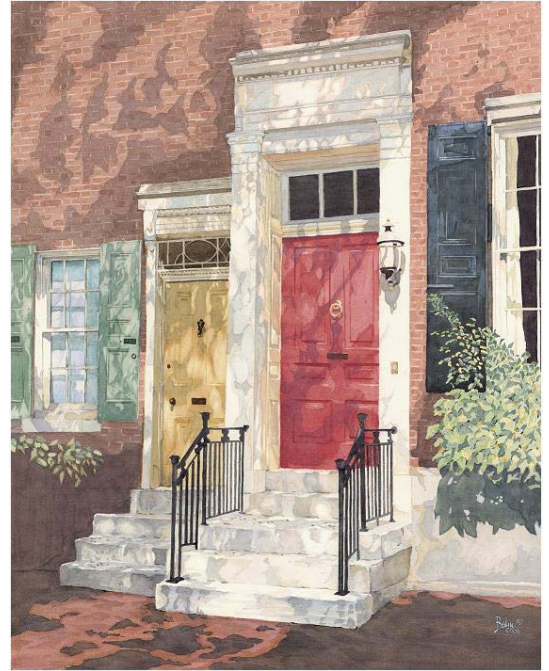
*Most workshop sessions are planned with a specific medium or technique to explore, but you are welcome to just come and paint. Materials and paints are supplied in many of the classes. A \$1.00 Donation is requested from all participants in the workshop to help in purchasing art supplies.

To check out one of the many books or videos from our library, see our librarians, Bill Devine or Rene Yohannan.

**OUR NOVEMBER PROGRAM
Fine Watercolor Painting with
Jim Rahn**

Jim Rahn grew up in Haddonfield, N.J. He now makes his home in Cherry Hill, N.J. with his wife and two sons. His interest in art started at an early age, always knowing he wanted to become an artist. He majored in art in high school, going on to study Illustration at Pratt Institute, in Brooklyn, N.Y. Being a life long resident of South Jersey, he uses the land and people of this region as the subjects in many of his paintings. A representational artist working mainly in watercolors, Jim has an illustrative style using both image and feeling to convey his messages in his paintings. Attracted to strong design and light patterns, he works from sketches and photographs taken in the field, and completes the painting back in the studio.

Jim has been juried into many group exhibitions, receiving numerous awards and is involved in area art organizations. His recent awards are: Frank C. Wright Memorial Award, American Artist Professional League National; Kent Day Coes Memorial Award of Watercolor, Allied Artist of America; Best of Show, Ocean City Arts Center Annual Juried Art Exhibit.



MESSAGE FROM YOUR EXECUTIVE BOARD

It has been a privilege to serve as your President for the last three plus years. And a very enjoyable experience working with so many dedicated volunteers. I look forward to helping the new officers, as needed, as Past President.

Since Marylou Reeves is recuperating from an operation, we welcome program suggestions and a possible program co-chairperson. Let me know if you can be of assistance.

Thank you all for your cooperation during my terms of office.

Mary Gayliard, WAA President

**Get Well Wishes go out to Marylou Reeves
We wish you a speedy recovery.**

**WAA Website is up and running:
www.willingboroart.org.
Suggestions and comments welcomed**

**WAA voting for officers
will be held at the Members' Meeting,
Wednesday, November 4th.
Room 300, Kennedy Center, Willingboro.**

Nominating Slate for WAA 2010

Presidential Candidate:	Donna Fascenda
1 st Vice-President & Exhibition Chair:	Joanne Sherman Muriel Golieb
Exhibition Co-Chair 2 nd Vice-President & Scholarship Chair	Joyce McAfee
Scholarship Co-Chair	Gene D'Agostino
Recording Secretary	Betty Brown
Corresp. Secretary	Frances Morrison
Treasurer	Elfriede Lipscomb
Past President	Mary Gayliard

Also nominations may be made from the floor.



**Joint WAA/BCAG
Holiday Party in lieu of
December Monthly Meeting**



Where: **Red Dragon Canoe Club**
221 Edgewater Avenue
Edgewater Park, NJ

When: **December 11th, 2009, 6-10 pm**

Please bring a covered dish to share. Call **Marilyn Gill, 856 983-1765**, at least a week ahead to tell her what you will bring, number of people attending, and how you can help with setup, serving or cleanup. Then come and have fun, enjoy the food and dancing!

Dinner will start at 6:30pm. Music for dancing from 7 to 10 pm by John Stevens! This is a WAA/BCAG joint party and all members may bring a guest!

From Rt. 130 N. take jug handle at the new Blue Dolphin Diner onto Beverly Rd.

From Rt. 130 S. make right onto Beverly Road; at corner of Oddfellows Cemetery and Penn Pizza. **Continue on Beverly Rd.** for 1.1 miles to Park Ave. (before the underpass). Turn right onto Park Ave. Turn left onto Linden Ave. The Red Dragon Canoe Club parking lot is at the end of Linden, just across Edgewater Avenue. The club is a three-story white mansion. You may park in the parking lot or on the street.



MEMBER'S NEWS:

- **Marlene Luneburg** and **RJ Haas** were juried into the Perkins Works on Paper show which is currently running.
- **Arlene Arons** will be exhibiting abstracts and landscapes in a solo art show at the Cherry Hill Library during the month of November. Reception: Friday, November 13 from 5:30 to 7:30pm.
- **Doris Peltzman** has two paintings accepted in the Montgomery County Group of Professional Artists (MCGOPA) exhibit which is on display in the Inquirer Gallery in Conshohocken, PA until December. In addition, Doris had work exhibited in the Perkins House Juried Exhibit which is on display until the end of November.
- **Ellen Levy, Richard Montemurro, Doris Peltzman, Marlene Robinson** and **Ellen Barnett** were accepted into the Camden County Cultural & Heritage Commission's 35th Annual Juried Exhibition at Hopkins House.
- **Ellen Barnett** will have a solo show at the Moorestown Wealth Management Group, 740 Marne Hwy, Bldg 100, Ste 101, Moorestown, NJ 08057, 888-696-4015. The show runs from December 7 to January 29. Reception: December 18 from 6:30-8:30pm. The show is called "Where Does This Stuff Come From?: Creativity Can Not Exist Without Imagination".
- **Norm Gaffin** had a solo show at the Palmyra Cove during the month of October.
- The following members were accepted into the Taste of Italy Show at the Center for the Arts in Marlton: **Michael Block, Alice Domineske, Norm Gaffin, Linda Hollinger, Jan Narducci, Dino Sistilli, Jim Sutton,** and **Rik Viola,**
- **Gene D'Agostino, Alice Domineske, RJ Haas, Linda Hibbs, Sandra Jones, Ellen LoCicero, Richard Montemurro, Dominic Martelli, Jan Narducci, Helen Troia-Shear** and **Agnes Tucker** were accepted into the Gloucester County College Annual Juried Art Show.
- WAA members in the 1st Annual Gisela J. Bly Juried Members Exhibit were: **Michael Block, Gisela Bly, Ben Cohen** (3rd Place), **Grace Cooper, Marlene Craig, Nona Dolan, Helene Blanche Dymkowske, Carol Fitzpatrick, Norm Gaffin, Mary Gayliard, Joy Hoffman, Evelyn S. Holmes, Bern Kennedy, Ann Malatin, Eleanor Mink, SaraLee Pindar, Richard Montemurro** (1st Place), **Hilda Ondovchak, Irvane Spracklin** (Honorable Mention), **James Sutton, Jan Terry,** and **Ethel White.**
- **Pat Poletti** has a solo exhibit of Chinese Watercolor and Pastels which will be on display during the month of November at the Sterling Bank, 320 Evesboro Medford Road, Marlton, NJ.
- **Carol Kaplan** had two photos accepted to the Croft Farm Photography Show.
- The Home Fine Art Gallery has invited guest artists (24 artists in all) to exhibit in November to a special show entitled "Viewpoints". The reception is November 15 from 3 to 6 PM. WAA members that are participating are: **Michael Block, Pat Block, Maureen Gass-Brown, Ben Cohen, Bette Johnson, Sandra Jones, Myra Ryan, Jan Terry, Linda Hibbs,** and **Agnes Tucker.**

- A November "Happening" will feature **Sandy Jones** doing a demo on Tempera Resist at the Home Fine Art Gallery. The demo is November 12 from 6:30 to 8:30. Refreshments will be served.
- The following WAA artists who also are Home Fine Art Gallery members will be exhibiting at the Palmyra Cove during the month of November: **Michael Block, Maureen Gass-Brown, Ben Cohen, Bette Johnson, Sandra Jones, Myra Ryan and Jan Terry**. For information on the Cove email: palmyracove.org
- Burlington County College Student Gallery - The Beauty of the Pinelands Show accepted the following members: **Gisela Bly, Gene D'Agostino, Bernard Kennedy, Irvane Spracklin, Joyce McAfee, Ellen Barnett, Jim Sutton and RJ Haas**.
- **Sharon Shaw** will be one of the artists featured in the upcoming Fox Chase Art Show and Sale on November 22nd at the New Hope Eagle Fire Company on Sugan Rd, from 12-5, one day only and for a great cause. Plenty of free parking. Sharon was recently honored with an Honorable Mention Award for one of her Egg Tempera Religious Icon Paintings at the St. Stephens Episcopal Church Religious Art Show.
- **SaraLee Pindar** has had photos in two juried shows: the Annual Center for the Arts Show and Creative Flow, a Juried Show at Washington Crossing, PA, for the benefit of Friends of the Delaware Canal. She also participated in the Religious Art Show at St. Stephen's in Beverly.
- **Virginia Ogden** had a piece of artwork accepted into the Riverton Country Club Show.
- **Richard Montemurro** was awarded first place in the New Jersey State Sr. Citizens Annual Art Show for Computer Graphics. He sold one photo at the MoorArt Show in Moorestown and sold two photos at St. Stephen's Second Annual Religious Art Exhibition. A photo was accepted in the Noyes Museum Weird NJ Exhibition thru November. In addition, one photo is on display in the Print Council of NJ's Exhibition in Johannesburg, South Africa.
- **Denise Bush** had three photos accepted into the Cherry Hill Arts Advisory Board's 'Fall Into the Arts' Juried Photography Exhibit held at the Croft Farm Arts Center. Her photo, 'Old Gas Pump,' won an Honorable Mention Award.
- **Arlene Arons, Marlene Robinson and Evelyn S. Holmes** had works accepted at the Philadelphia Sketch Club Absolutely Abstract Show.
- **Joy Hoffman** was juried into the "Fall Juried Art Exhibition" at the Medford Arts Center. She also participated in the "Great Pumpkin Festival" with MoorArts.

OPP-ART-UNITIES...

- **Hawthorne Gallery Small Works** will be held from November 1st to January 3rd. Gallery located on 697 Stokes Road, Medford Lakes, NJ, 08055. This exhibition is open to all artists 18 years or older. Artists may submit work, fine art only. There is a \$12 entry fee for each piece. Delivery: November 1ST between 12 noon and 5 pm. **Reception:** Sunday November 15, at 5:00PM Hawthorne Gallery. The public is invited. For more information email Marlene Craig, at mrsraig2@verizon.net or call Pamela Wallenhurst at 609 654-4144.
- **Long Beach Island Foundation of the Arts and Sciences Small Works Juried Exhibition** drop off until November 2. Two dimensional work must not exceed 12" x 12" square. Three

dimensional work must not exceed 7" x7" x 7". Entry fee \$20 for up to four works. Contact LBI for more information – 609 494-1241 x107 or email gallery@lbifoundation.org.

- **Medford Arts Center Announces Members Only Show & Sale!** Just in time for the Medford Dickens' Festival on December 5th. Exhibition dates are December 4, 2009 - January 10, 2010 with an opening reception on December 4 at 6 PM. The "MAC Members Show and Sale" entry form is available now at www.ArtsInMedford.org. Eligible works for hanging must be 12" and smaller in any direction; matted works must be 30" or smaller in any direction. Entry fee \$10 per piece, two piece limit. There will be no commission taken on sold artworks. For more info call 609 654-6033 or write MedfordArtsInfo@aol.com.
 - **The 2010 Juried Photography Exhibition at the MAC.** Exhibition dates are February 27 to April 11, 2010. Awards totaling \$600 will be presented at the opening reception which will be held on Saturday, February 27, from 6- 8:30 pm. Traditional and digital entries will be received (hand delivery only) on Friday, February 19 and Saturday, February 20, 12-5 pm. Juror is Michael Froio, Head of the Photography Department, Drexel University. There is a \$10 fee per entry for MAC members. Non members pay \$15 per entry. The prospectus will be available late November at the Medford Arts Center and www.ArtsInMedford.org. For more information email MedfordArtsInfo@aol.com or call 609 654-6033
-

SHOWS TO SEE:

- **Willingboro Art Alliance 14th Annual Open Juried Art Exhibition** held at Mount Holly Public Library. Reception: **November 14** from 6 to 8:30pm. Show closes November 30th.
- **Long Beach Island Small Works 2009** – Runs from November 7th until January 10th. Reception: **November 14** from 5 to 7pm. Address: 120 Long Beach Boulevard, Loveladies, NJ 08008.
- **Hawthorne Gallery Small Works Show** - November 1, 2009 to January 3, 2010. Reception: **November 15** starting at 5pm. Address: 97 Stokes Road, Medford Lakes, NJ, 08055.
- **Smithville Juried Art Exhibition** runs until November 7th. Address: Smithville Mansion, Smithville Road, Eastampton, NJ. Gallery hours: Monday, Tuesday, Wednesday and Saturday 11 to 3.
- **Burlington County College Student Gallery & Art Store** The Beauty of the Pinelands Show closes November 20th. 1 High Street, Mount Holly, NJ 08060. Call 609 267-5618 or email: artgallery@bcc.edu for current gallery hours.
- **The Circle of Life Artists Exhibit of the Mandalas- A Mirror to Life** featuring the work of **Ellen Barnett, Alice Domineske, Angela Nocera and Irvane Spracklin** runs until November 20th. Address: Samaritan Inpatient Hospice Center Gallery at Virtua Hospital, Mt Holly, NJ
- **Point of View Exhibit at Gallery 125, Trenton** runs from **November 13 to January 2, 2010**. For more information log on to website at www.gallery125.com
- **Center for the Arts in Southern New Jersey – Annual Open Juried Photography Exhibition** – November 9 to 24. Reception: Thursday, **November 12** from 7 to 9pm.
- **Center for the Arts in Southern New Jersey – Chinese Watercolor Exhibition** runs from December 1 to 18. Reception: Thursday, **December 10** from 7 to 9pm.

- **Camden County Cultural & Heritage Commission's 35th Annual Juried Exhibition at Hopkins House Show** runs until November 21. Address: 250 South Park Drive, Haddon Township, N.J.
- **Perkins Center for the Arts Works on Paper** runs until December 6. Address: 395 Kings Highway, Moorestown, NJ. Open Thursday and Friday from 10 to 4 and Saturday and Sunday from 1 to 3.
- **2009 New Jersey Arts Annual show at the Noyes Museum of Art** runs from December 4th to February 28th. Address: 733 Lily Lake Road, Oceanville, NJ 08231
- **Burlington County Art Guild \$100 & Under Members Exhibit** runs from November 1 to November 30 at the Burlington County Library, 5 Pioneer Blvd., Westampton, NJ.
- **Riverfront Renaissance Center for the Arts Artful Giving and Spirited Surprises Show** runs from November 20th to December 29th. Address: 22 N. High Street , Millville, NJ 08332
- The **Ocean County Artist's Guild** in Island Heights is offering an "Afternoon Tea in our Winter Garden" on **December 13th** from 2:00 to 4:00 pm. The artists of the Guild will use their talents to transform their studio into a winter garden. Guests will enjoy freshly brewed tea served in period cups, share delicate sandwiches and savor dainty treats while listening to a short presentation on the history of tea, tea at the Peto House and the traditions of the OCAG. The cost is \$20 and seating is limited. Contact the Guild at 732 270-3111 between 1:00 and 4:00 pm Tuesday through Sunday.

**REMINDER:
KENNEDY ART CHANGEOVER SET FOR
SATURDAY, January 9th, 2010**

This is a friendly reminder that artists may drop off and pick up art at the Kennedy Center in Willingboro on Saturday, January 9th, between 9:00 and 11:00 am. We usually leave work on display three months, but you may leave it up longer if you wish. However, if your work has been on display at least six months, please pick it up and replace it with something different -- if you have it. The hallway exhibit draws a lot of attention, and we have sales now and then. Bring in your art work and drop it off. Then tell your friends and neighbors about the exhibit. Note: You must be a paid up member of WAA in order to display work. Annual dues are \$20.

Please email our editor with art news for
December/January Sketchbook by November 18th
to dfascenda@comcast.net
and leave a voice message

MARK YOUR CALENDAR:

- Oct 30 **WAA Juried Show - Deliver art work from 4 to 6:30pm**
- Oct 31 **WAA Juried Show - Deliver art work from 9 to 11:30am**
- Nov 4 **WAA Monthly Meeting – 7pm**
- Nov 12 Center for the Arts – Reception from 7 to 9pm

- Nov 12 Sandy Jones demo at the Home Fine Art Gallery - 6:30 to 8:30pm
- Nov 14 Long Beach Island Small Works 2009 – Reception from 5 to 7pm
- Nov 14 WAA 14th Annual Show – Reception from 6 to 8:30pm**
- Nov 15 Home Fine Art Gallery Show "Viewpoints"- reception 3 to 6 PM
- Nov 15 Hawthorne Gallery - Reception at 5:00PM.
- Nov 18 WAA Board Meeting – 4:30-6:30pm**
Please note change in time and date

**If you wish to have a link for the WAA website to your website,
send the url and a jpg of one of your works (72 dpi)
to dfascenda@comcast.net**

2009 Kennedy Building in Willingboro closure

Wednesday, Nov. 11 -- Veterans' Day
Thursday & Friday, Nov. 26 -27 -- Thanksgiving
Friday, Dec. 25 – Christmas

Inclement Weather Information

To see if the building is closed due to inclement weather, please call
(609) 877-2200 ext.1116 and a live person will answer.