



JULY 2010
SKETCHBOOK
Willingboro Art Alliance

July Monthly Meeting
*****Room 300, Kennedy Center*****
Levitt Parkway & Kennedy Way, Willingboro

Wednesday, July 7, 7:00 PM

Auction conducted by Bill Devine

Refreshments for our July Meeting
will be provided by
Virginia Ibarra and Irene Kucz waj

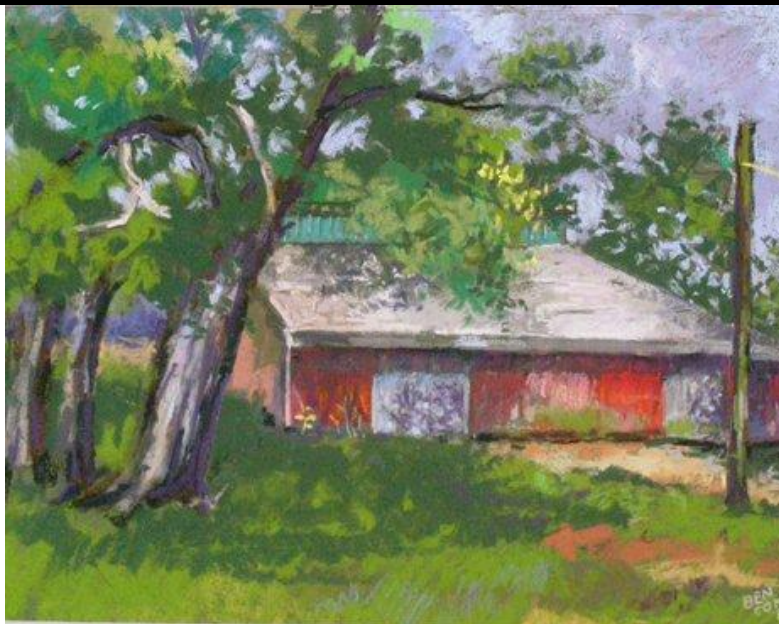
EXECUTIVE BOARD MEETING WILL BE
JULY 14TH – 4:30PM-6:30PM
ROOM 300 AT THE KENNEDY CENTER

JULY WORKSHOPS*
(all levels welcome)
9AM, Wednesdays, Room 300, Kennedy Center

- | | |
|----------------|------------------------------------|
| July 7 | Painting with Palette Knife |
| July 14 | Curtin's Marina |
| July 21 | Critique |
| July 28 | Pen/Brush with Ink |

Reminder:
WAA Impressionism Show
at the Burlington City Lyceum
Delivery July 1
Reception July 17

*Most workshop sessions are planned with a specific medium or technique to explore, but you are welcome to just come and paint. Materials and paints are supplied in many of the classes. A \$1.00 Donation is requested from all participants in the workshop to help in purchasing art supplies. To check out one of the many books or videos from our library, see our librarians, Bill Devine or Rene Yohannan.



Allen's Farm by Ben Cohen

July Meeting will be an AUCTION!!!!

CELEBRATING OUR 46th YEAR
Founded 1964 - Incorporated 1965
The oldest art organization in Burlington County

Website: www.willingboroart.org

OUR JULY PROGRAM

Wednesday, July 7th, 7 PM

The Place:

JFK Center, at Levitt and JFK Parkway,
Room 300, Ground Level
(Regular Meeting Room for WAA)

Welcome All Artists and Friends of Artists

The Willingboro Art Alliance will be holding an Auction of Pastels, Fredrix Stretched Canvas (brand new), Cold press Watercolor paper and many other art supplies.

This is your opportunity to acquire these items at very favorable prices

CASH AND CHECKS WILL BE
ACCEPTED FOR PAYMENT

also

A raffle will be held (\$1.00 per ticket) for an “Affordable Masterpiece” plein air pastel painting, matted, framed and ready for hanging.

MEMBERS NEWS:

- **RJ Haas** was accepted into the Burlington County College Summer Show. He is also showing at the Philadelphia Sketch Club Exhibit at Newman Gallery in Philadelphia. RJ was also accepted into the Riverfront Renaissance Center for the Arts in Millville for the June show.
- The following WAA members were accepted into the MAC Works on Paper Show in June: **Arlene Arons, Susan Barnes, Ben Cohen, Nona Dolan, Alice Domineske, Linda Hibbs, Tom Kimball, Dominic Martelli, Sherry McGrath, Sharon Paisner, Doris Peltzman, Irvane Spracklin, and Dolores Ann Zeigler.**
- Mac ..and all the rest! A celebration of Art featured the following members: **Ellen Barnett, Susan Barnes, Marlene Craig, Nona Dolan, Gene D’Agostino, Alice Domineske, RJ Haas, Joy Hoffman, Tom Kimball, Doree Loschiavo, Joanne Markowicz-Bilarczyk, Sherry McGrath, Richard Montemurro, Doris Peltzman, Arleen Potter, Lael Rutherford, Marcia Steinbock, Jim Sutton, and Pam Wallenhurst.**
- Burlington Co. Art Guild Members Show - CareOne at Moorestown, Senior Care Community was held on June 4 to June 28 2010 with the following WAA members displaying their work: **Gisela J. Bly, Ben Cohen, Grace Cooper, Ethel Dillon, Nona Dolan, Carol Fitzpatrick, Mary Gayliard, Joy Hoffman, E.S. Holmes, Pam Levin, Sherry D. McGrath, Ellie Mink, Richard Montemurro, SaraLee Pindar, and Jan Terry.**
- *Family is Where the Art Is* was a diverse exhibit featuring **Michael Block**, his wife **Nanny** (Pat) and son Mitchell. Michael is so proud to include his son in this exhibit which was held in June at the Home Fine Art Gallery in Mount Holly.

MORE MEMBER NEWS...

- **Bern Kennedy** and **Frank McCulla** had a show at the Moorestown Wealth Management in June.
- **Susan Barnes** received the Plein Air/Landscape Award in the 38th annual Open Juried Robert Ransley Art Show which ended May 28th. Living LBI Magazine is using an image of her painting "Collecting Shells" on the cover of the summer issue. She is a participant in Hawthorne Gallery's Invitational Show of artists who were award recipients in their Spring Juried Show. The gallery is in Medford, NJ. William Ris Gallery in Stone Harbor, NJ featured her work in a group show in June. North End Trilogy presented a solo show of her paintings in June at their new location 4th and Broadway, Barnegat Light, NJ on Long Beach Island.
- **Marlene Robinson** worked with kids on Earth Day at Smithville on June 19th. The workshop, "Paint With Dirt To Save The Earth", used colored dirt from sites around NJ while conferring a bit of geological info to kids and parents. It was great fun.
- **Ben Cohen** received a Second Place Award at the New Jersey Pastel Painters Society (NJPPS) Second Annual Open Juried Exhibition held June 14th to July 26th, at the Flinker Pavilion Art Gallery, Mt. Holly, NJ. He is also showing Philadelphia Sketch Club Exhibit at the Newman Gallery in Philadelphia.
- The Hanging Together Group, **Marlene Craig, Joyce McAfee, Ellie Mink, Irvane Spracklin** and **Pamela Wallenhurst**, will be exhibiting their paintings titled "Summer Rotation" at the Hawthorne Gallery, 697 Stokes Rd, Medford Lakes, from July 17 to October 15. The Gallery is open Mon thru Fri from 10am to 6pm and On Sat from 10 to 5pm.

MORE MEMBER NEWS...

- The Rittenhouse Square Fine Art Show celebrated its 79th year in June. It included the work of **Sandy Jones** and **Maureen Gass Brown**.
- **Richard Montemurro** had work in the following locations from May to July: 2 photos in Ransley. 2 photos in CFA; 5 photos in Markeim Seashore Exhibit; 2 photos in Small Works at Old Church, Demerest, NJ, (Mikhail Zakin Gallery.); 1 photo in Camden County Senior Citizen's Exhibit-(Awarded 1st prize in Digital Art); 5 photos accepted in River Renaissance Land & Sea Exhibition; 1 photo in CareOne exhibition; 9 trading card images in Trading Card Exhibit at Smithville Gallery; and participated in the Art House Coop's Self Portrait, My Dreams, & Sketch Books Projects.
- **Sharon Paisner, Irvane Spracklin, Marlene Craig and Pamela Wallenhurst** are showing their watercolor paintings at Hopkins House until August.
- Burlington County Art Guild's 38th Robert Ransley Open Juried Art Exhibition Show included the following WAA members: **Susan Barnes***, **Michael Block**, **Gisela Bly***, **Denise Bush***, **Janet Cebular**, **Ben Cohen**, **Marlene Craig**, **Sherry McGrath**, **Gene D'Agostino**, **Carol Fitzpatrick***, **Mary Gayliard**, **Bianca Galliani**, **Joy Hoffman**, **Linda Hollinger***, **Evelyn Holmes**, **Sandy Jones***, **Carol Kaplan***, **Bern Kennedy**, **Thomas Kimball***, **Pamela Levin**, **Lois Lohse**, **Joanne Markowicz-Bilarczyk**, **Dominic Martelli***, **Peg McShea**, **Richard Montemurro**, **Ginny Ogden**, **Hilda Ondovchak***, **Sharon Paisner***, **Doris Peltzman**, **SaraLee Pindar***, **Arleen Potter***, **Lael Rutherford**, **Myra Ryan***, **Janice Scheckter**, **Sharon Shaw**, **Elaine Solinski***, **John Tegley***, **Jan Terry**, **A.R. Tucker***, and **Pamela Wallenhurst**. (*denotes winner).

MORE MEMBER NEWS...

- The following WAA members are registered in the Batsto Plein Air Competition sponsored by the Pine Shores Art Association: **Linda Hibbs, Dominic Martelli, Gene D'Agostino, Connie Randles** and **Tom Kimball**.
- **Doris Peltzman** has her award winning painting on display in the Philadelphia Sketch Club's Exhibit at Newman Gallery in Philadelphia. Doris will have recent works exhibited this summer at the William Ris Gallery in Stone Harbor, NJ and East End Gallery in Margate, N.J.
- **Linda Hibbs** won an Honorable Mention at the MAC Show and a Merit Award at the Pine Shores Spring Juried Show.
- **SaraLee Pindar** had two photographs at the Center for the Arts Flower Show ("Summer Display" and "Cottage Garden") and had one photo at CareOne ("Descent from the Castle.") During the month of June, SaraLee had a solo show at the Burlington County Library and another at Sterling Bank in Marlton. Her photograph, "Nesting Swan," has been juried into the show at Gallery 14 in Hopewell. (Gallery 14 is the only Fine Art Photography Gallery in New Jersey.) She is also scheduled for a one-man show at the Pemberton Library for the month of September.
- **Tom Kimball** and **Fran Morrison** are having an exhibit at Pemberton Library during July and August. Reception is Wed. July 14 from 6 to 8 pm.
- **John Tegley** is presenting a show of recent art work at the Willingboro Public Library Gallery during the month of July. The Show opens Tuesday July 6th with a reception scheduled for Saturday July 10th from 2 to 5 PM.
- In June, **Evelyn S. Holmes** received the Special Recognition Award in poetry for her poem honoring the late founder of the poetry competition conducted for Merchantville and Pennsauken residents each year.

WAA Figure Drawing Class ongoing



WAA has a costume figure workshop started and there are a few more openings. Location: Room 300 at the Kennedy Center in Willingboro on Thursday mornings. The artists work from a costume model starting at 10am until 1pm. The cost is \$68.00 per eight sessions or \$10.00 to drop in with permission. One week there was a cowboy and in other classes were women in colonial costumes. New

models and sets every time for 1-3 week poses. Hope you can join us and bring a friend. The class size is limited to 12. If you would like to sign up, please contact Denise McDaniel at dmmmmc@comcast.net or call 609-217-7161.

OPP-ART-UNITIES...

- **WAA Impressionism Show at the Lyceum in July, 2010 – Reception July 17- Work to be delivered July 1. Download prospectus from website: www.willingboroart.org**

- **Mount Holly Windows for Art** - Now accepting proposals for installations and artwork displays in empty store front windows in Historic Downtown Mount Holly.



Windows for Art (WFA) breaks down the walls of the traditional private art gallery to bring art to the public via the storefront window, where it is accessible to anyone simply walking down the street. For more information and an exhibit proposal application contact mainstreetmountholly@gmail.com Sponsored by Main Street Mount Holly www.mainstreetmountholly.com

OPP-ART-UNITIES... (continued)

- Open Call to Artists from the **Burlington County College Library** - Artists interested in exhibiting in the Burlington County College Library, please contact the BCC Art Committee directly at thearts@bcc.edu
- **MAC Members' Show and Sale** Opens on July 23-August 22, 2010. Drop off dates will be announced at a later date. Contact person: Tracey Femiano at medfordartsinfo@aol.com or watch www.artsinmedford.org
- **Painters on the Promenade: Art in the City** is sponsoring outdoor painting days on July 17, 2010 (Blues and Jazz Heritage Festival) and August 21, 2010. Contact Nancy K. Measey Kurts at 609-386-4171 for information. No fee.
- **Smithville Annex Gallery Juried Photography Exhibit** July 20 - August 25 - The annual Juried Photography Exhibit will showcase the work of photographers from New Jersey, Pennsylvania and Delaware. The work will include both traditional and digital photography in a wide range of subjects; portraits, landscapes, abstract images, photojournalism, candid snapshots, nature studies and more. Entry Fee: \$20 for up to three pieces. **Delivery: July 10 & 12, 11am - 3pm.** Reception: Tuesday, July 20, 7-9pm. For prospectus, please visit www.burlcoarts.com
- **Call for All Artists: Art In The City** Sponsored by the City of Burlington Tourism Council presents it's annual Art Show and Sale located on Wood Street in the historic City of Burlington on Wood Street Fair Day, Saturday, September 11 from 10am-4pm. **Application Deadline: Friday, Aug.6th.** Contact Nancy K. Measey Kurts for more information and an application measeykurts@aol.com

OPP-ART-UNITIES...(continued)

- **Annex Gallery Juried Art Exhibit - The Annual Juried Art Exhibition**, now celebrating its 33rd season featuring artists from New Jersey, Pennsylvania and Delaware. It will include watercolors, oils, acrylics, drawings, mixed media and sculpture. Entry Fee: \$20 for up to three pieces Exhibit Dates: September 14 - November 6. **Delivery: August 28 & 30, 11am - 3pm.** Reception: Tuesday, September 14, 7-9pm. For prospectus, please contact llemyre@co.burlington.nj.us or visit www.burlcoarts.com
- **Center for the Arts Waterscape Exhibition. Delivery Tuesday, July 27 from 10am to 3pm and Wednesday, July 28 from 10am to 3pm and 7 to 9 pm.** Reception Thursday, August 12 from 7 to 9pm. Each artist may submit two pieces – fee is \$5.00 per piece.
- **Arts in the Park 2010**, Sunday, September 26, 2010. **Deadline for Application: August 1, 2010 or until spaces are filled.** Burlington County's 33rd Annual Arts in the Park is a music, theater, dance and juried fine art & craft festival situated in Historic Smithville Park in Eastampton, NJ. Artists' work represents a broad spectrum of media and expression including painting, drawing, mixed media, photography, pottery and glass. Live entertainment is showcased on four stages. Interactive art activities provide an opportunity for children and their families to explore the fine and performing arts. For an application for the Art & Craft Festival, contact llemyre@co.burlington.nj.us or visit www.burlcoarts.com

OPP-ART-UNITIES...(continued)

- **The Witches Ball Black Market.** The Witches Ball is an outdoor costume ball held in the historic Mill Race Village section of downtown Mount Holly, New Jersey. A diverse collection of music, fire, art and revels await those who have the imagination to take part. Performances blend with the patrons as the night progresses. Costumes are encouraged. More than witches are welcome. Participants delve deep into the genres of Fantasy, Medieval, Renaissance, Victorian, Steampunk, Goblin, Gothic, Carnival, Celtic and Faerie lore. The highlight of the evening is a Costume Contest with cash and prizes for the most original costumes in several different categories. Fees:\$50 for a 10'x10' space. Artists must supply their own tents (optional, but encouraged), lights and outdoor rated extension cords. Electricity will be provided. **Application Deadline: August 1, 2010 or until spaces are filled.** For an application, contact info@thewitchesball.com or visit www.TheWitchesBall.com

SHOWS TO SEE:

- **Art Walk Shows - A Fine Arts and Crafts Show** Organizing Company on Independence Day Weekend, July 3, 4, & 5 at "The Walk" Outlets in Atlantic City, NJ! Go online and learn more about this and other upcoming events at www.artwalkshows.com. If you are not familiar with the location of this show, log onto www.acoutlets.com.
- **Gallery 125 - Up Close and Personal Show** Photography Show running from August 13 through October 2, 2010. For further info: 609 989-9119 or visit www.gallery125.com.

SHOWS TO SEE: (continued)

- **New Jersey Craft Arts Annual** to be held at the Newark Museum through August 8.
- **MAC 2010 Works On Paper Exhibition** until July 18 at the Medford Arts Center, 18 North Main Street, Medford. Contact us at: 609-654-6033, www.ArtsInMedford.org or MedfordArtsInfo@aol.com.



Please email our editor with art news for August *Sketchbook* by July 21st to dfascenda@comcast.net or call (609) 859-0607 and leave a voice message

President's Message:

I hope this newsletter finds you painting up a storm and getting ready for more shows. Of course the one show we are anxiously awaiting is the WAA Impressionism show at the Burlington City Lyceum. I do hope you all have read the email/information and are ready to enter. Joanne Sherman has worked hard to make this an educational as well as an artist event so we hope to see you all there. (The prospectus can also be found on the website www.willingboroart.org.)

Donna Fascenda
WAA President

MARK YOUR CALENDAR:

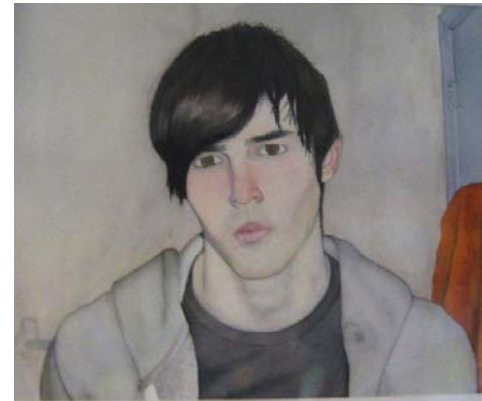
- July 7 **WAA Monthly Meeting – 7pm**
- July 8 CFA Member Show reception - 7 to 9pm
- July 10 John Tegley reception - 2 to 5pm
- July 14 WAA Board Meeting – 4:30 to 6:30 pm**
- July 14 Fran Morrison & Tom Kimball reception – 6 to 8pm
- July 17 WAA Burlington City Lyceum reception - 3 to 5pm**
- July 20 Smithville Photography Show reception – 7 to 9pm
- July 24 *MAC Is Art in the Jeans* reception – 6 to 8:30pm

Get Well Wishes go out to

**Michael Block
Henry Kornstedt
Ken Leinweber
Marlene Luneburg
Barbara Ollarvia
Hilda Ondovchak
Karan Pearson
Marylou Reeves
Betty Richter
Bert Sacker
Jan Terry**

We wish you all a speedy recovery.

TEEN ART WINNER FOR 2010 will have his portfolio available to view at the July Meeting – let's come out and wish Brandon a successful time in college next year.



Brandon Sax, Lenape High School senior is the winner of the WAA 2010 scholarship. His painting titled "Just Me in the Bathroom," is a self portrait. Brandon has been accepted by many colleges including SVA, Pratt, Rutgers, Drexel, etc. He plans to major in

communications and design. He is VP of the National Honor Society, Secretary of the German Club, and Art Club at Lenape.

Welcome New Members:

**Carolyn Burke
Dr. Donna Cotzen
Joe Sarkees
Elaine M. Solinski**

2010 Kennedy Building in Willingboro Closure

Sunday & Monday, July 4 and 5 -- Independence Day
Monday, Sept. 6 -- Labor Day
Monday, Oct. 11 -- Columbus Day
Thursday, Nov. 11 -- Veterans' Day
Thursday & Friday, Nov. 25 -26 -- Thanksgiving
Friday, Dec. 24 – Day before Christmas
Saturday, Dec. 25 -- Christmas

Inclement Weather Information

To see if the building is closed due to inclement weather, please call 609-877-2200 ext.1116 and a live person will answer.

Next Kennedy Art Changeover will occur on SATURDAY, July 10th, 2010

This is a friendly reminder that artists may drop off and pick up art at the Kennedy Center in Willingboro on Saturday, July 10th, between 9:00 and 11:00 am. We usually leave work on display three months, but you may leave it up longer if you wish. However, if your work has been on display at least six months, please pick it up and replace it with something different -- if you have it. The hallway exhibit draws a lot of attention, and we have sales now and then. Bring in your art work and drop it off. Then tell your friends and neighbors about the exhibit. Note: You must be a paid up member of WAA in order to display work

WAA OFFICERS - 2010

President	Donna Fascenda
First Vice President & Exhibition Chair	Joanne Sherman
Exhibition Co-Chair	Muriel Golieb
Scholarship Chair	Joyce McAfee
Scholarship Co-Chair	Gene D'Agostino
Recording Secretary	Betty Brown
Corresp. Secretary	Frances Morrison
Treasurer	Elfriede Lipscomb
Past President	Mary Gayliard

WAA COMMITTEE CHAIRPERSONS

Membership	Shirley Cohen
Programs	Mary Gayliard
Workshops	Henry R. Kornstedt III
	Ben Cohen
Life Class	Marcia Steinbock
Sketchbook Editor	Donna Fascenda
Sketchbook Pickup	Nona Dolan
	Rhoda Gordon
Hospitality	Betty Kornstedt
Sunshine	Barbara Alterman
Library	Bill Devine
	Rene Yohannan
Liaison	Ken Leinweber

If you have news, e-mail Donna Fascenda at dfascenda@comcast.net or call at the phone number is listed above